



GREAT WESTERN TOURS™

Exploring the World Together

PO Box 91416, Pasadena CA 91109-1416 - 626-577-9717 - www.GreatWesternTours.net

Olli Explores Taiwan 2026

March 2-14, 2026 - a small group experience

13 day/11 nights \$5091.00 for 30 participants + Airfare

Day 1: Monday, 2 March 2026

10:40 am: Departure from Los Angeles International Airport (LAX).

Day 2: Tuesday, 3 March 2026 - D

Evening: Arrival in Taipei, immigration, customs, and transfer to Cozzi Minsheng Hotel. Dinner: Enjoy a relaxing dinner at the hotel before settling in for the night.

Accommodation: Cozzi Minsheng Hotel

Day 3: Wednesday, 4 March 2026 - BL

Morning: Breakfast at the hotel.

Afternoon: Explore Taipei on a coach tour, visiting key landmarks such as Taipei Central Station, Chiang Kai-Shek Memorial Hall, Taiwan Central Bank, The Presidential Hall, and the National Museum with insights into Taiwan's history.

Lunch: Enjoy a local lunch near 228 Peace Park.

Evening: Experience the vibrant atmosphere of Shilin Night Market for dinner on your own.

Accommodation: Cozzi Minsheng Hotel

Day 4: Thursday, 5 March 2026 - BLD

Morning: Breakfast at the hotel followed by departure to YiLan, visiting Kavalan Distillery.

Lunch: Indulge in a delicious lunch before exploring Taroko National Park.

Evening: Check into Silks Place Taroko Hotel and enjoy dinner.

Accommodation: Silks Place Taroko-5*

Day 5: Friday, 6 March 2026 - BD

Morning: Breakfast at the hotel and departure to Chihpen, stopping by the scenic Sanxiantai Arch Bridge. Lunch stop - self purchase

Evening: Check into Hotel Royal Chihpen and savor a delightful dinner.

Accommodation: Hotel Royal Chihpen-5*



Day 6: Saturday, 7 March 2026 - BD

Morning: Enjoy breakfast at the hotel before heading to Kenting National Park in Kenting (Pindong).
Lunch stop - self purchase
Evening: Check into Fullon Hotel and relish dinner.
Accommodation: Fullon Hotel



Day 7: Sunday, 8 March 2026 - BLD

Morning: After breakfast, explore Pindong and indulge in lunch.
Afternoon: Visit Kaohsiung's Fo Guang Shan Temple and enjoy shopping and gourmet vegetable dinner driving on to Tainan City
Accommodation: The Place Tainan

Day 8: Monday, 09 March 2026 - BLD

Morning: Breakfast at the lodge followed by departure to Tainan for a city tour. Lunch stop.
Evening: Dinner on your own, either at a night market or a department store food court.
Accommodation: The Place Tainan

Day 9: Tuesday, 10 March 2026 - BLD

Morning: Breakfast at the hotel and departure to Alishan National Park. Lunch stop.
Evening: Check into Alishan Hotel, followed by dinner.
Accommodation: Alishan Hotel-5*

Day 10: Wednesday, 11 March 2026 - BLD

Morning: Enjoy breakfast at the hotel before departing to Sun Moon Lake, stopping at the Indigenous Culture Centre. Lunch stop.
Evening: Check into Einhan Taihe and savor dinner.
Accommodation: Einhan Taihe



Day 11: Thursday, 12 March 2026 - BLD

Morning: Start the day with breakfast followed by a morning bike ride around Sun Moon Lake.
Lunch stop. Afternoon: Visit Wufeng Lin's Residence in Miaoli before checking into Howard Plaza Hsinchu.
Evening: Enjoy dinner at the hotel. Accommodation: Howard Plaza Hsinchu

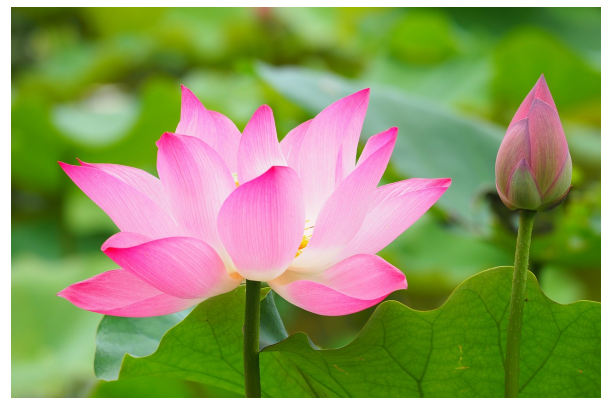
Day 12: Friday, 13 March 2026 - BL

Morning: Breakfast at the hotel. Board the train from Hsinchu to Taipei. Mid day stop at at famous Din Tai Fung for final lunch (included). Visit to 101.
Evening: Light Dinner at leisure (after large lunch), perhaps exploring a night market.
Accommodation: Cozzi Minsheng Hotel

Day 13: Saturday, 14 March 2026 - B

Morning: Enjoy breakfast at the hotel before visiting Jiufen and the A-MEI Tea House.
Late afternoon - check -in for evening flight to Los Angeles.

Arrival in Los Angeles same day.



This small-group experience is being thoughtfully crafted specifically for the OLLI program. We plan to have Richard N. Liu, a Vancouver native who previously escorted the OLLI program to China, serve as the on-site coordinator for this tour of Taiwan. Richard brings a unique blend of expertise, combining his deep understanding of Chinese culture—both on the mainland and in Taiwan—with his lived experience in North America. His guidance will ensure the group travels comfortably while immersing themselves in the vibrant and rich cultural heritage of Taiwan. The tour will also include local guides who experts in the region.

Inclusions –

- 11 nights hotel accommodation on TWIN or DBL sharing basis (Hotels named or similar to be committed once groups is formed)
- Daily breakfast
- English speaking guide, 43-seat air-conditioned coach
- Daily lunch and dinner at local restaurants (set menu) as included in the itinerary above. Lunches on Day 5 and 6 are self purchase and dinner on day 3 is on your own in the night market(escort Richard Liu will offer suggestions for the night market). The lunch on Day 12 will be filling so dinner will be on your own again at the night market if you need it.
 - Not including drinks (soft or alcohol)
- Entrance / Admissions as described in the itinerary
- Local bottled drinking water (2 bottles per person per day)
- Tips for hotel porters, local guide and driver
- Travel Gallery Full Time bilingual English/Chinese Escort

Costs: - The costing is estimated as of 2024 - we expect final pricing in March of 2025.
25 passengers (minimum) \$5169 per person twin occupancy
30 passengers (min) \$5091 per person twin occupancy
Single supplement (add) \$2123.00

Excluded:

Airfare - Estimated at \$1000 (final pricing and booking available 334 days prior to return date.
Registration and deposit will be through the [Great Western Tours website](#).

Insurance when registering:

Enhanced insurance must be purchased within 14 days of first deposit. After that date Standard insurance can be added until 7 days prior to travel.

Other notifications:

- CSUF Olli requires all participants to purchase travel insurance. GWT will offer two policies at the time of registration or you are welcome to purchase your own.
- This tour will not be easy for walker or wheelchair travelers, a travel companion would be required.
- Taiwan visa is free for 90 days per entry.
- Your Passport must have six month available dates and two available pages.

END